

shine



BITECH®
CERAMICA PORCELLANATA

CERAMICA PORCELLANATA: *Il supporto di BITECH® viene realizzato attraverso nuove tecnologie e innovativi impianti produttivi che ne esaltano le valenze estetiche oltre che funzionali, realizzando una sintesi tra la migliore tradizione ceramica e le più sofisticate tecnologie.*

LA PUREZZA: *L'assoluta purezza dell'impasto, nato da una ricerca finalizzata ad esaltare le migliori caratteristiche estetiche e tecniche, viene ottenuta attraverso l'utilizzo di materie prime purissime atomizzate e cotte a temperature elevatissime (1200° c.)*

LA PRECISIONE: BITECH® viene realizzata a calibro zero rendendo estremamente precisa e facile la posa del materiale.

LA BELLEZZA: BITECH® è un prodotto con caratteristiche estetiche superiori. Questa innovativa tecnologia consente infatti di enfatizzare la profondità del colore, la lucentezza e i contrasti degli smalti.

Der Scherben von BITECH® wird mit Hilfe neuer Technologien und erneuernder Produktionsanlagen gefertigt, die nicht nur die ästhetischen, sondern auch die benutzerfreundlichen Qualitäten herausstellen, wodurch eine Verbindung zwischen der besten Keramik-Tradition und den hochmodernsten Technologien hergestellt wird.

Die vollkommene Reinheit der Masse, die aus einer besonderen internen Forschungsarbeit hervorgegangen ist, welche zu dem Zweck ausgeführt wurde, die besten ästhetischen und technischen Eigenschaften hervorzuheben, wird durch den Gebrauch von reinsten, atomisierten Rohstoffen erlangt, die bei höchsten Temperaturen gebrannt werden (1200° C).

BITECH® wird mit Toleranz Null gefertigt, so dass das Material außerordentlich präzise und einfach verlegt werden kann.

BITECH® ist ein Produkt mit außerordentlichen ästhetischen Eigenschaften.

Durch diese innovative Technologie werden die Tiefenwirkung der Farbe, der Glanz und die Kontraste der Glasuren betont.

BITECH® tile bodies are produced with state-of-the-art technology implemented in innovating manufacturing plants that enhance the products aesthetic and functional properties, achieving a combination of the best tile traditions and advanced modern technological know-how.

The sheer purity of the body, the result of in-house research and development aimed at bringing out the best in terms of aesthetic appearance and performance, is achieved by using pure raw materials that are atomized and fired at extremely high temperatures (1200° C.)

BITECH® tiles are made with zero tolerance in terms of dimensional precision ensuring extreme accuracy and problem-free installation.

BITECH® is a product that boasts superior aesthetic characteristics. This innovative technology makes it possible to bring out the depth of colour, as well as the contrasts and lustre of the glazes.

ФАРФОРОВАЯ КЕРАМИКА: Суппорт BITECH® изготавливается посредством новых технологий и инновационных установок, которые подчеркивают, помимо функциональной, также его эстетическую ценность, синтезируя наилучшую керамическую традицию и утонченные технологии.

ЧИСТОТА: Абсолютная чистота смеси, являющаяся результатом долгих исследований, направленных на выделение наилучших эстетических и технических характеристик, достигается посредством использования чистейшего атомизированного сырья, обжигаемого при высочайших температурах (ок. 1200°С)

ТОЧНОСТЬ: BITECH® производится нулевого калибра, делая исключительно точной и простой укладку материала.

КРАСОТА: BITECH® - это продукт с наилучшими эстетическими характеристиками. На самом деле, эта новаторская технология позволяет насыщать глазурь глубиной цвета, блеском и контрастами.

shine 

20x20

20x20
shine



| Corallo

| Arabesque

| Mosaico

BITECH
CERAMICA PORCELLANATA



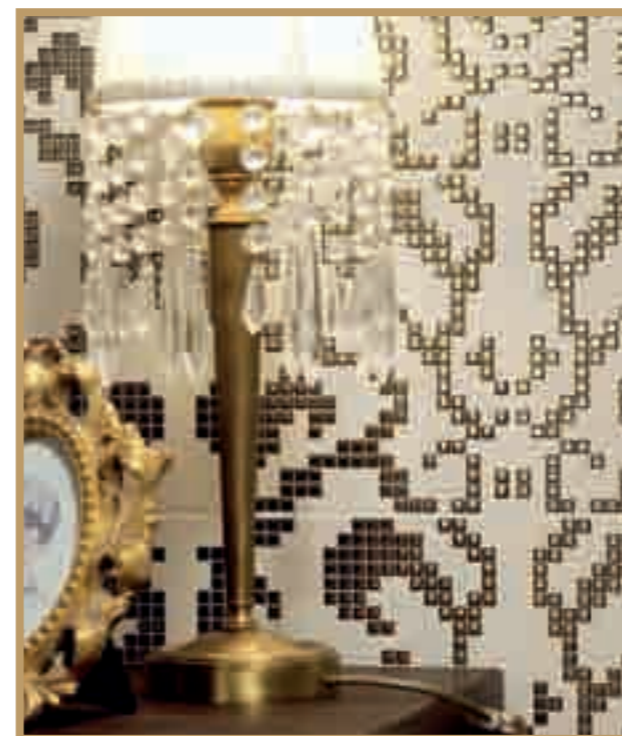
B5001A SHINE Bianco 20x20 39



B5051A SHINE Bianco
Mosaico 20x20 40



B5061A SHINE Bianco
Listellato 20x20 40



shine



20x20

Grigio

Antracite

Corallo

Nero



B5005A SHINE Grigio 20x20 42



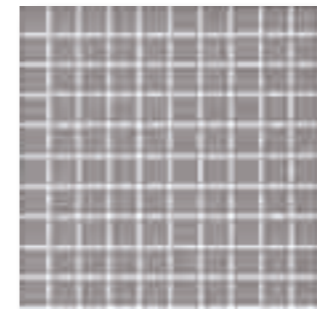
B5004A SHINE Antracite 20x20 42



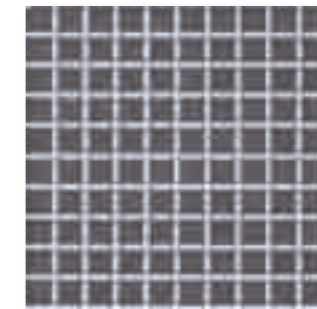
B5022A SHINE Corallo 20x20 42



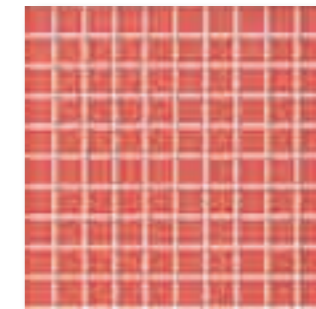
B5003A SHINE Nero 20x20 42



B5054A SHINE Grigio Mosaico 20x20 42



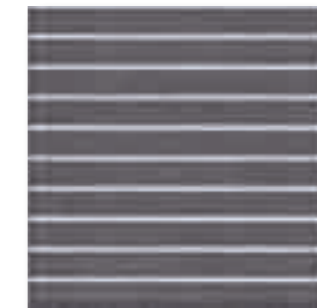
B5053A SHINE Antracite Mosaico 20x20 42



B5059A SHINE Corallo Mosaico 20x20 42



B5064A SHINE Grigio Listellato 20x20 42



B5063A SHINE Antracite Listellato 20x20 42



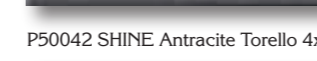
B5069A SHINE Corallo Listellato 20x20 42



P50042 SHINE Antracite Torello 4x20 17



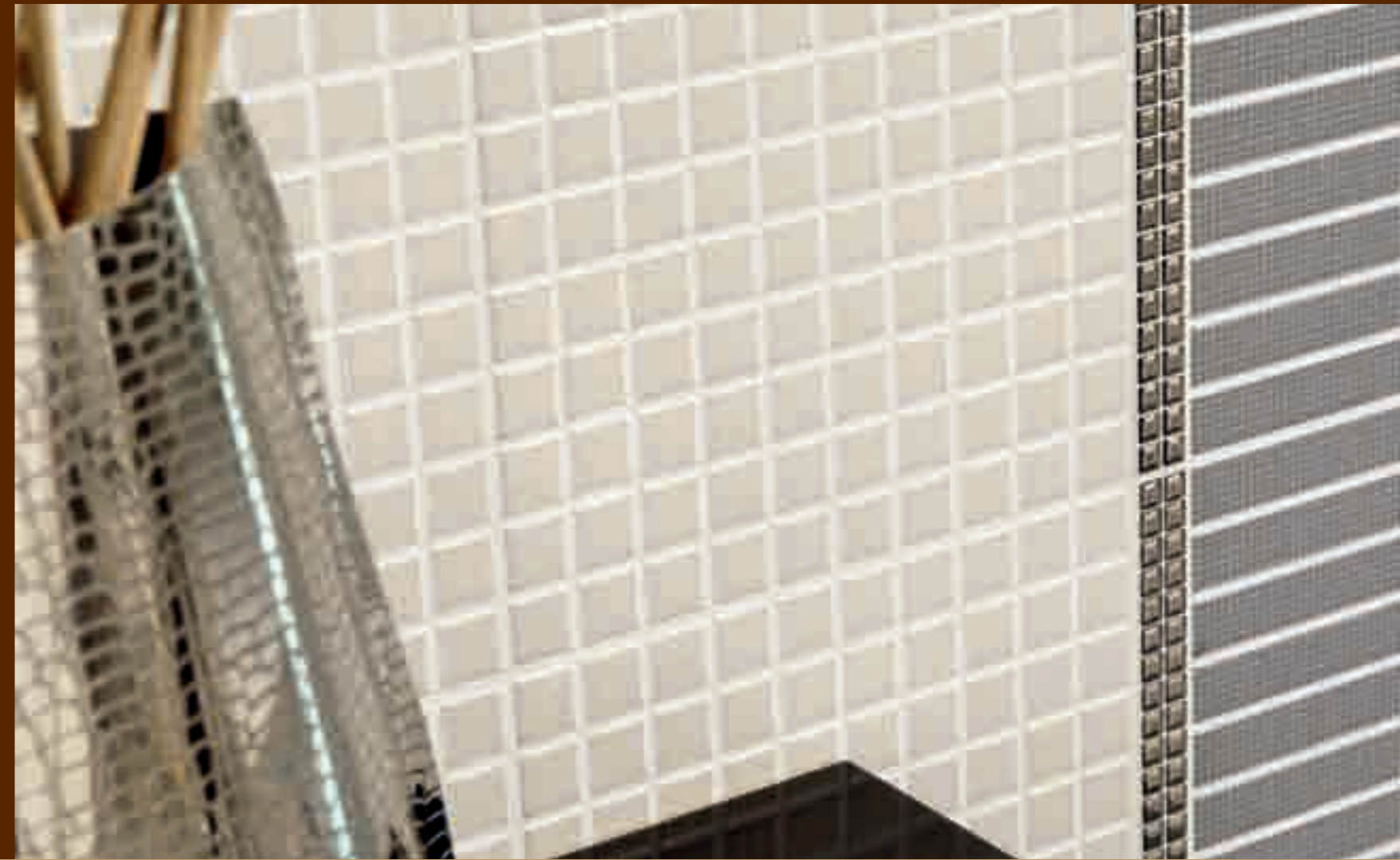
P50222 SHINE Corallo Torello 4x20 17



P50342 Listello Mosaico Antracite 2x20 9



P50322 Listello Mosaico Corallo 2x20 9



shine



I Nero - Antracite - Grigio 20x20
Decoro Arabesque

shine



| Nero - Antracite - Grigio 20x20 - Decoro Arabesque



shine



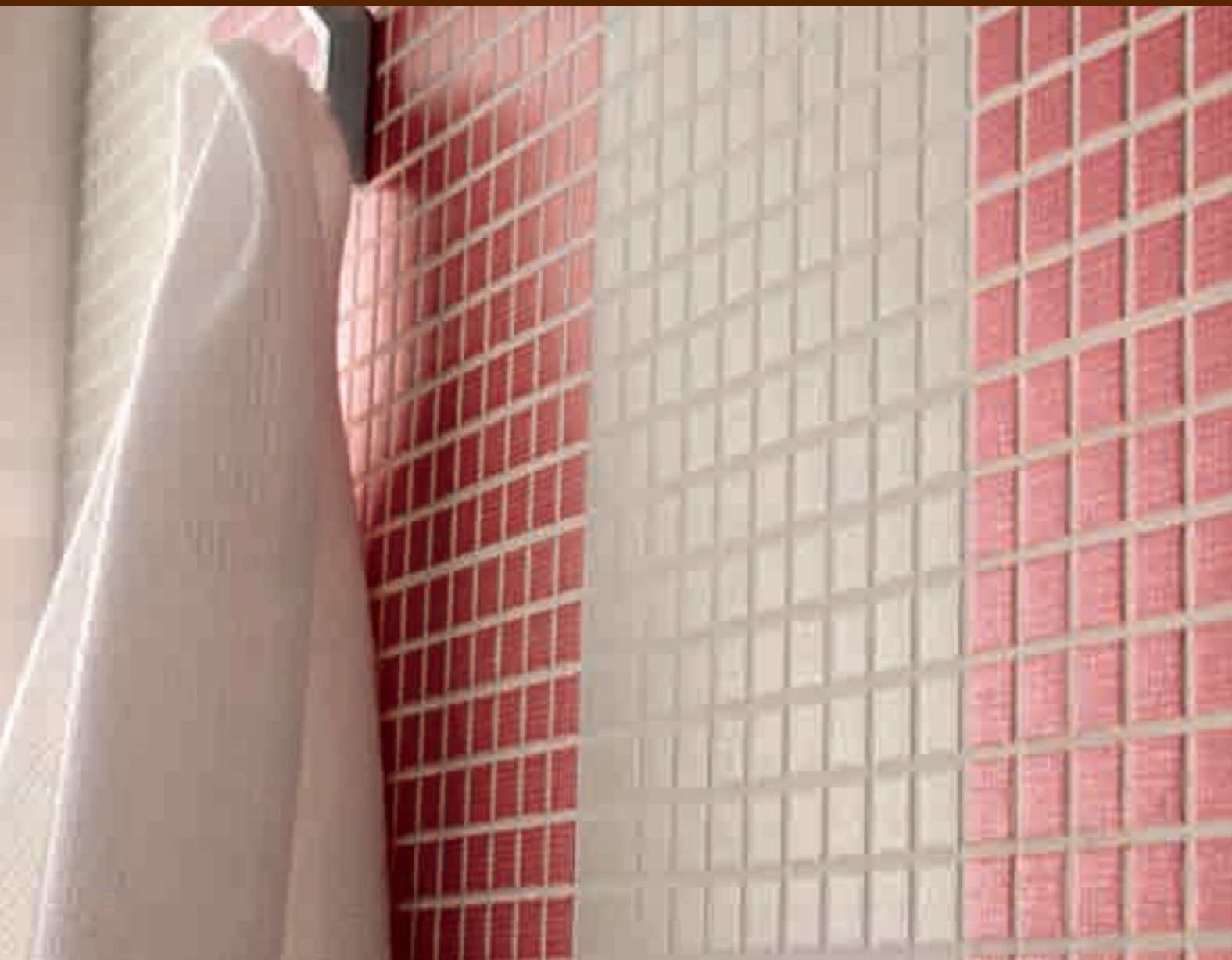
Corallo - Antracite 20x20
Decoro Corallo



shine



| Corallo - Antracite 20x20
Decoro Corallo



shine



| Corallo - Antracite 20x20 - Decoro Corallo



shine



20x20

Beige

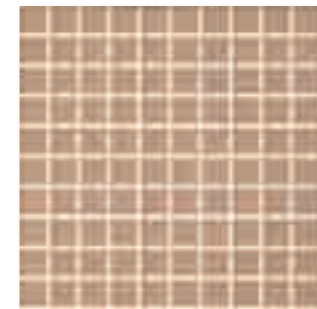
Tabacco

Arancio

Marrone



B5008A SHINE Beige 20x20 42



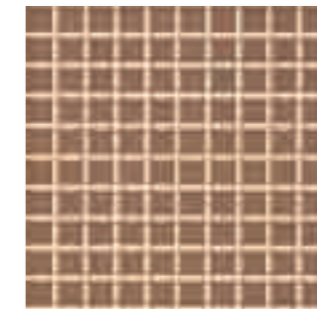
B5056A SHINE Beige Mosaico 20x20 42



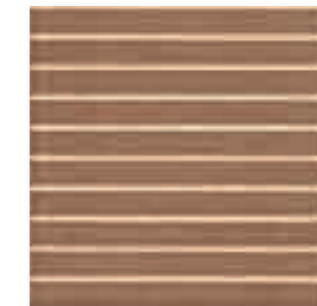
B5066A SHINE Beige Listellato 20x20 42



B5007A SHINE Tabacco 20x20 42



B5055A SHINE Tabacco Mosaico 20x20 42



B5065A SHINE Tabacco Listellato 20x20 42



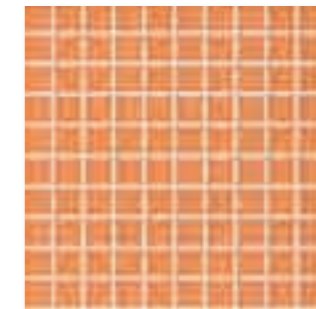
P50652 SHINE Tabacco Torello 4x20 17



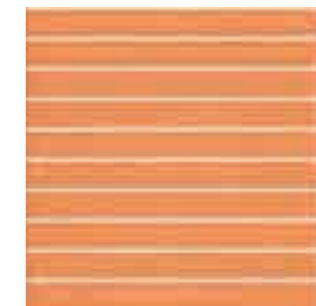
P50352 Listello Mosaico Tabacco 2x20 9



B5032A SHINE Arancio 20x20 42



B5151A SHINE Arancio Mosaico 20x20 42



B5161A SHINE Arancio Listellato 20x20 42



P51612 SHINE Arancio Torello 4x20 17



P50312 Listello Mosaico Arancio 2x20 9



B5006A SHINE Marrone 20x20 42



shine



| Tabacco - Marrone 20x20
Decoro Arabesque



shine



| Tabacco - Marrone 20x20 - Decoro Arabesque



shine



20x20

Azzurro

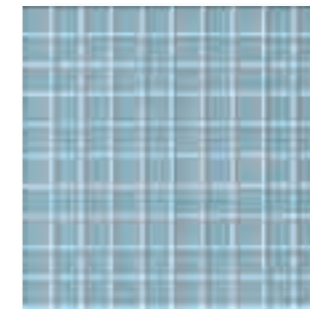
Avio

Viola

Blu notte



B5012A SHINE Azzurro 20x20 42



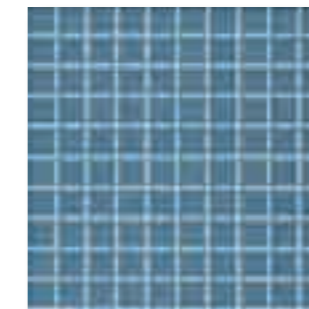
B5058A SHINE Azzurro Mosaico 20x20 42



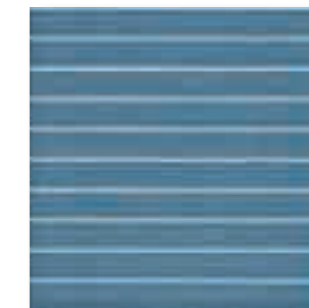
B5068A SHINE Azzurro Listellato 20x20 42



B5011A SHINE Avio 20x20 42



B5057A SHINE Avio Mosaico 20x20 42



B5067A SHINE Avio Listellato 20x20 42



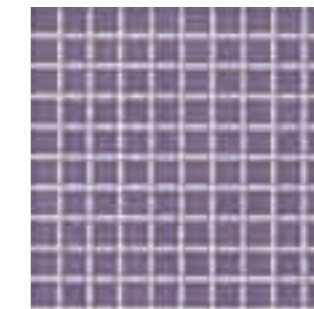
P50092 SHINE Avio Torello 4x20 17



P50392 Listello Mosaico Avio 2x20 9



B5042A SHINE Viola 20x20 42



B5052A SHINE Viola Mosaico 20x20 42



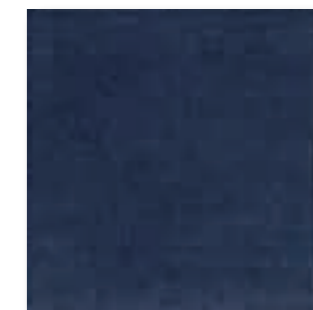
B5062A SHINE Viola Listellato 20x20 42



P50422 SHINE Viola Torello 4x20 17



P50332 Listello Mosaico Viola 2x20 9



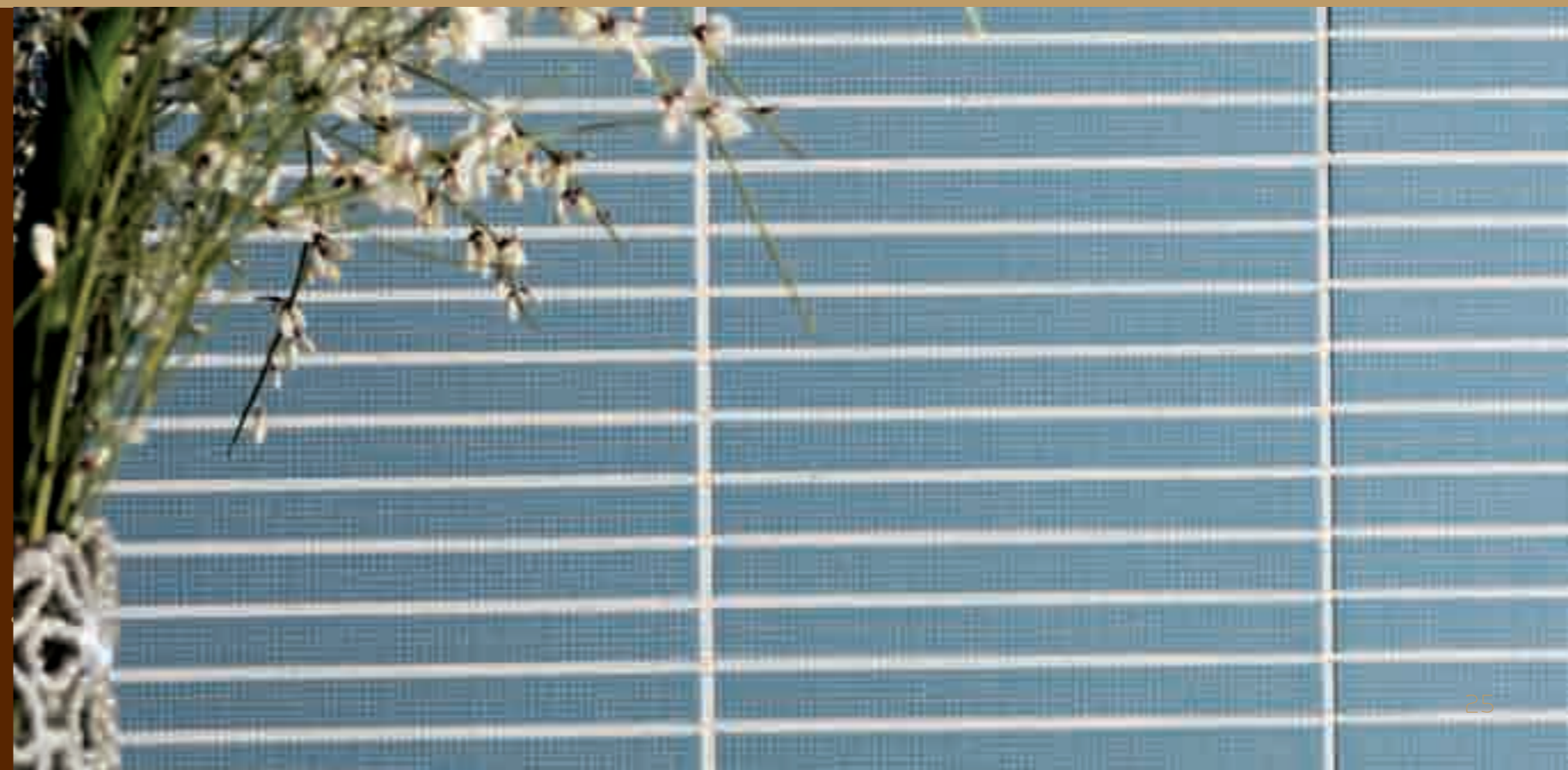
B5009A SHINE Blu Notte 20x20 42



shine



Blu Notte - Azzurro
Avio - Viola 20x20



shine



| Blu Notte - Azzurro - Avio - Viola 20x20

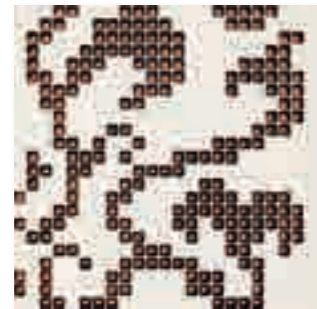




P50152 Listello Mosaico Oro 12
2x20



P50155 Mosaico Arabesque A 17
Oro 20x20



P50165 Mosaico Arabesque B 17
Oro 20x20

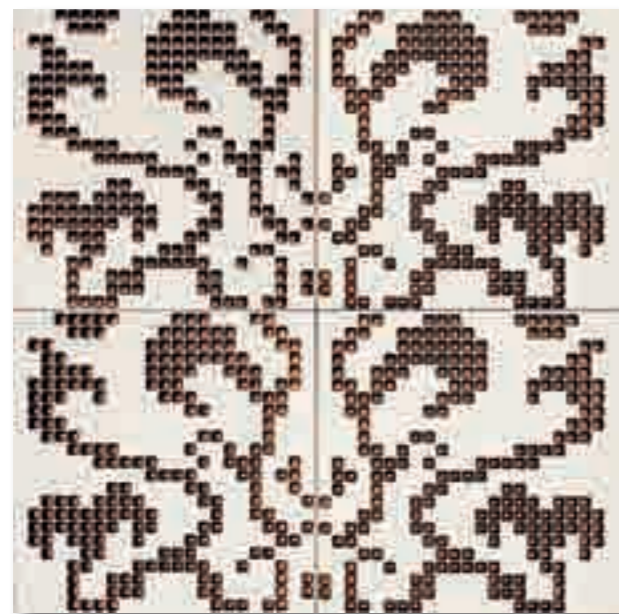


P50255 Mosaico Arabesque A 29
Argento 20x20

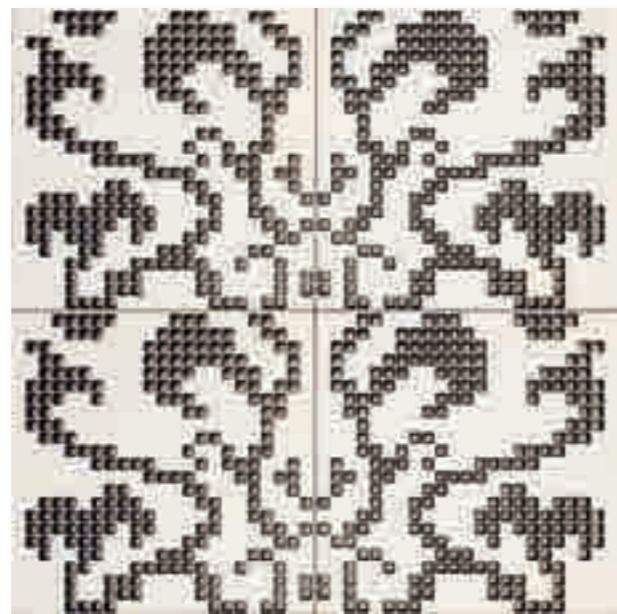
P50162 Listello Mosaico Argento 12
2x20



P50265 Mosaico Arabesque B 29
Argento 20x20



Comp. Pannello Realizzato con Mosaico Arabesque A e B Oro



Comp. Pannello Realizzato con Mosaico Arabesque A e B Argento



P50153 Listello Corallo Misto 13
Oro 6x20

P50152 Listello Mosaico Oro 12
2x20



C50159 Pannello Comp. 4 Pz. Corallo Oro

49



P50322 Listello Mosaico Corallo 9
2x20

P50324 Listello Corallo Rosso 10
Misto 6x20



C50329 Pannello Comp. 4 Pz. Corallo Rosso 40x40

47



P50163 Listello Corallo Misto 13
Argento 6x20

P50162 Listello Mosaico Argento 12
2x20



C50169 Pannello Comp. 4 Pz. Corallo Argento

49

shine



| Decori



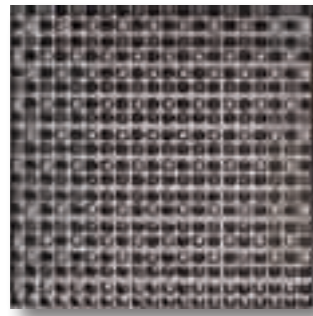
P50052 Listello Shine Metal Grigio 16 3x20



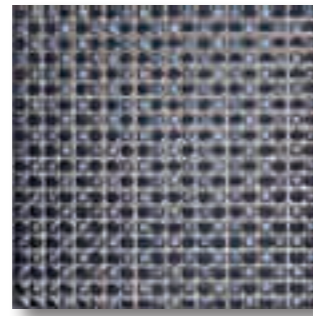
P50122 Listello Shine Metal Azzurro 16 3x20



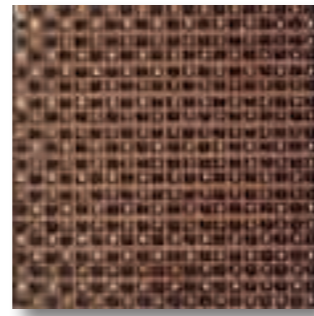
P50062 Listello Shine Metal Marrone 16 3x20



P50053 Shine Metal Formella Grigio 20x20 43



P50123 Shine Metal Formella Azzurro 20x20 43



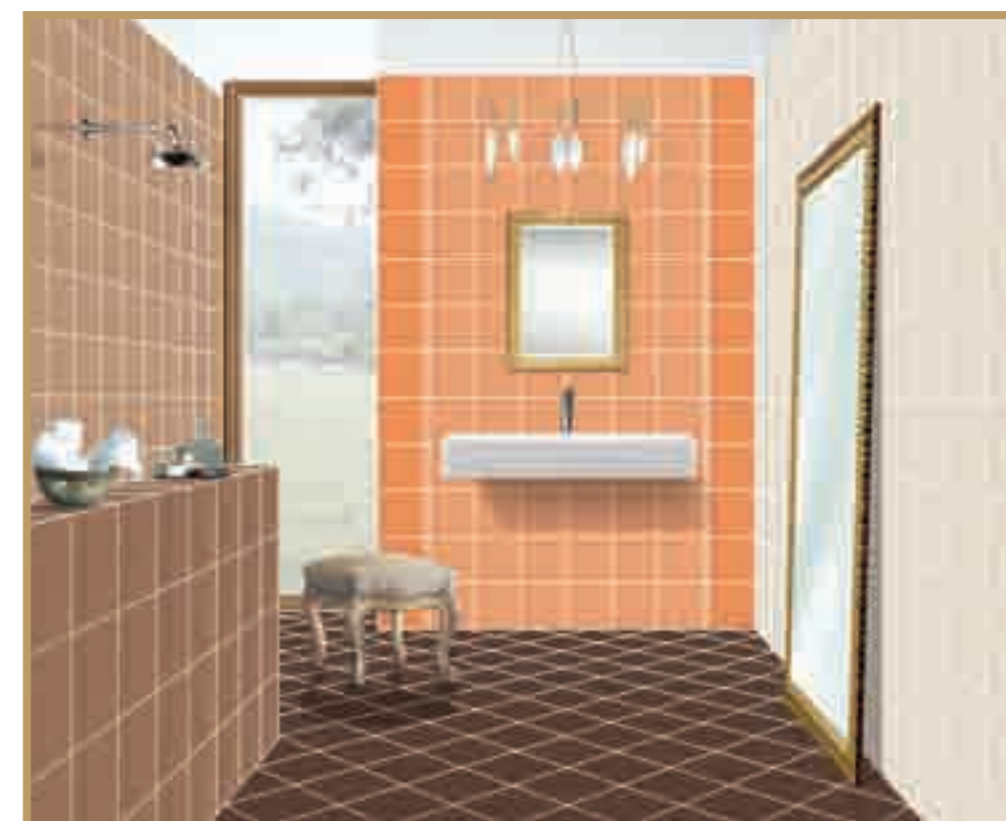
P50063 Shine Metal Formella Marrone 20x20 43

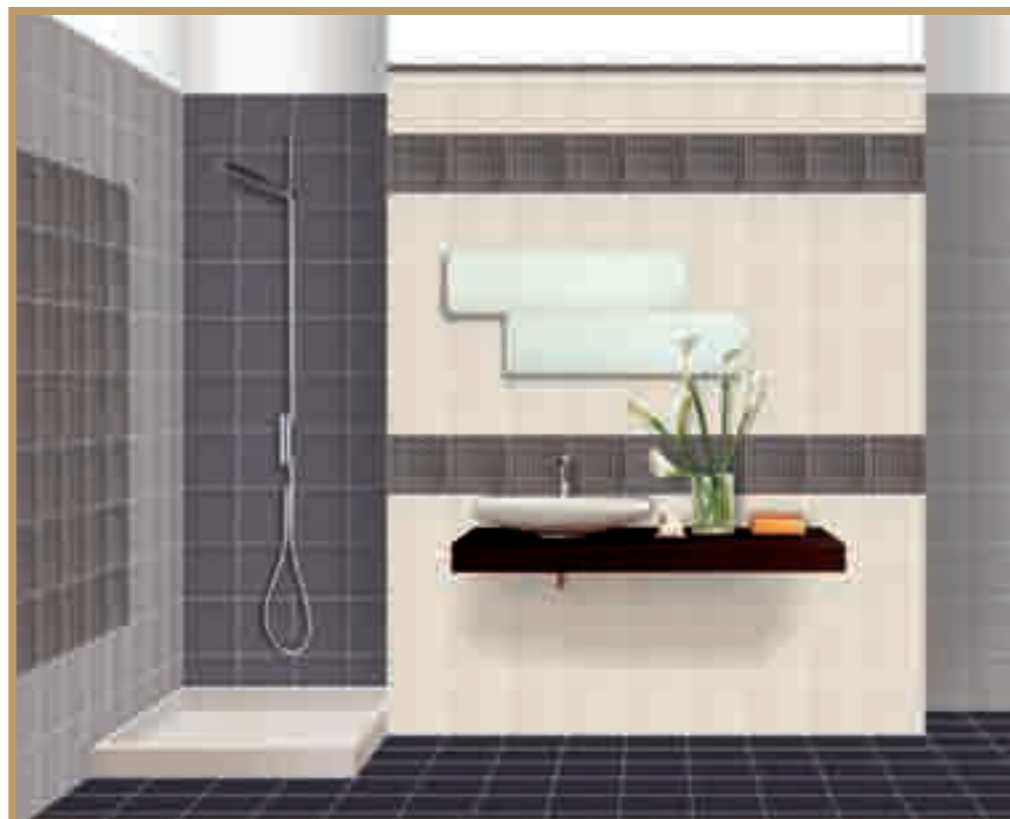


shine



Proposte Ambienti





I decori prodotti utilizzando oro brillante o argento non sono resistenti all'usura da sfregamento, per cui è indispensabile proteggere la superficie di ogni decoro durante la posa. Per la pulizia non usare assolutamente prodotti abrasivi ma semplicemente cotone ed alcool.

Ornaments made with shiny gold or silver do not resist to friction wear. For this reason it is imperative to protect the surface of each ornament during positioning. For cleaning, use simple cotton and alcohol. DO NOT use abrasive products.

Die Verzierungen die aus Glanzgold oder Silber hergestellt wurden sind nicht gegen Abnutzung durch Reibung resistent, deshalb muss die Oberfläche jeder Verzierung während der Anbringung geschützt werden. Benutzen Sie für die Reinigung keine scheuernden Produkte, sondern nur Watte und Alkohol.

Данные украшения, изготовленные с использованием блестящего золота или серебра, не обладают стойкостью к износу при трении, следовательно, необходимо защищать поверхность каждого украшения во время их установки. Для чистки никогда не использовать абразивные продукты, а только хлопок и спирт.

shine



shine Imballaggi - packing - emballages - verpackung - Упаковки						
Formato	Pezzi/scatola	Mq/scatola	Kg/scatola	Scatole/pallet	Mq/pallet	Kg/pallet
Size cm	Pieces/box	Sq.Mt./box	Weight/box	Box/pallet	Sq.Mt./pallet	Weight/pallet
Format cm	Pièces/boîte	Mq/boîte	Poids/boîte	Boîte/pallet	Mq/pallet	Poids/pallet
Format cm	Stück/Karton	Qm/Karton	Gewichte/Karton	Karton/pallet	Qm/pallet	Gewichte/pallet
Формат см	Изделий/коробку	M2/коробку	Kr/коробку	Коробок/паллеты	M2/паллеты	Kr/паллеты
20x20 Fondo	31	1,24	18,00	72	89,28	1312
20x20 Fondo Mosaico	31	1,24	18,00	72	89,28	1312
20x20 Fondo Listellato	31	1,24	18,00	72	89,28	1312
4x20 Torello	6	-	0,72	-	-	-
20x20 Arabesque	12	-	6,40	-	-	-
2x20 List. Mosaico	12	-	0,56	-	-	-
6x20 List. Corallo	12	-	1,9	-	-	-
40x40 Comp. Corallo	4	-	6,30	-	-	-
3x20 List. Metal	24	-	2,049	-	-	-
20x20 Formella Metal	12	-	6,831	-	-	-

Le tonalità dei colori sono indicative
 The colour shades are indicative
 Les nuances des couleurs sont indicatives
 Die Farbtöne sind annähernd
 ОТТЕНКИ ЦВЕТОВ - ЧИСТО ОРИЕНТИРОВОЧНЫЕ

A.D. ARCHILINEA PROGETTI
 Foto: Modo Fotografia
 Stampa: Telligraf



01036 NEPI (VT) Loc. Settevene S.S. Cassia Km 36,300
Tel. 0761 5291 - 4 linee - Fax. 0761 527156 - www.vallelungacer.it