



**MAGMA**  
naturale scultura  
20x20 | 8"x8"



**ECO CERAMICA S.p.A.**

Via Don P. Borghi, 5

42013 S. Antonino di Casalgrande (RE)

Tel. +39 0536 991701 • Fax +39 0536 990164

[www.ecoceramica.com](http://www.ecoceramica.com) • [ecoceramica@ecoceramica.com](mailto:ecoceramica@ecoceramica.com)





# MAGMA

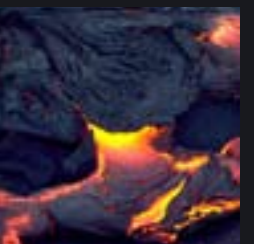
naturale scultura

20x20 | 8"x8"

Dalla terra incandescente nascono forme e colori imprevedibili ma pieni di fascino, mistero immenso che solo a guardarli si rimane estasiati... è il mistero del magma.

From incandescent earth unexpected shapes and colours may born, charm and mystery able to capture with a single look... this is magma secret.

Из раскалённой земли рождаются неожиданные цвета и формы, которые полны очарованием и загадкой... загадкой магмы.





**MAGMA**  
naturale scultura  
20x20 | 8"x8"





**MAGMA**  
naturale scultura  
20x20 | 8"x8"



pavimento:  
**MAGMA**  
20x20 | 8"x8"  
decoro:  
**MOSAICO**  
20x20 | 8"x8"  
rivestimento:  
**MAGMA**  
20x20 | 8"x8"  
decoro:  
**MOSAICO**  
20x20 | 8"x8"  
**ORME**  
20x20 | 8"x8"





pavimento:  
**MAGMA**  
20x20 | 8"x8"  
rivestimento:  
**MAGMA**  
20x20 | 8"x8"  
decoro:  
**LUNA ROSSA**  
20x20 | 8"x8"

**MAGMA**  
naturale scultura  
20x20 | 8"x8"



gres porcellanato **ECO CERAMICA** | 09





**Magma**

20x20 | 8"x8"



**Danzatrici**

20x20 | 8"x8"



**Orme**

20x20 | 8"x8"



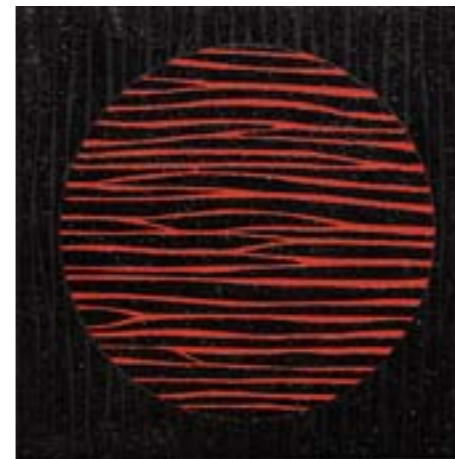
**Quadretti**

20x20 | 8"x8"



**Ramo**

20x20 | 8"x8"



**Luna Rossa**

20x20 | 8"x8"



**Mosaico**

20x20 | 8"x8"

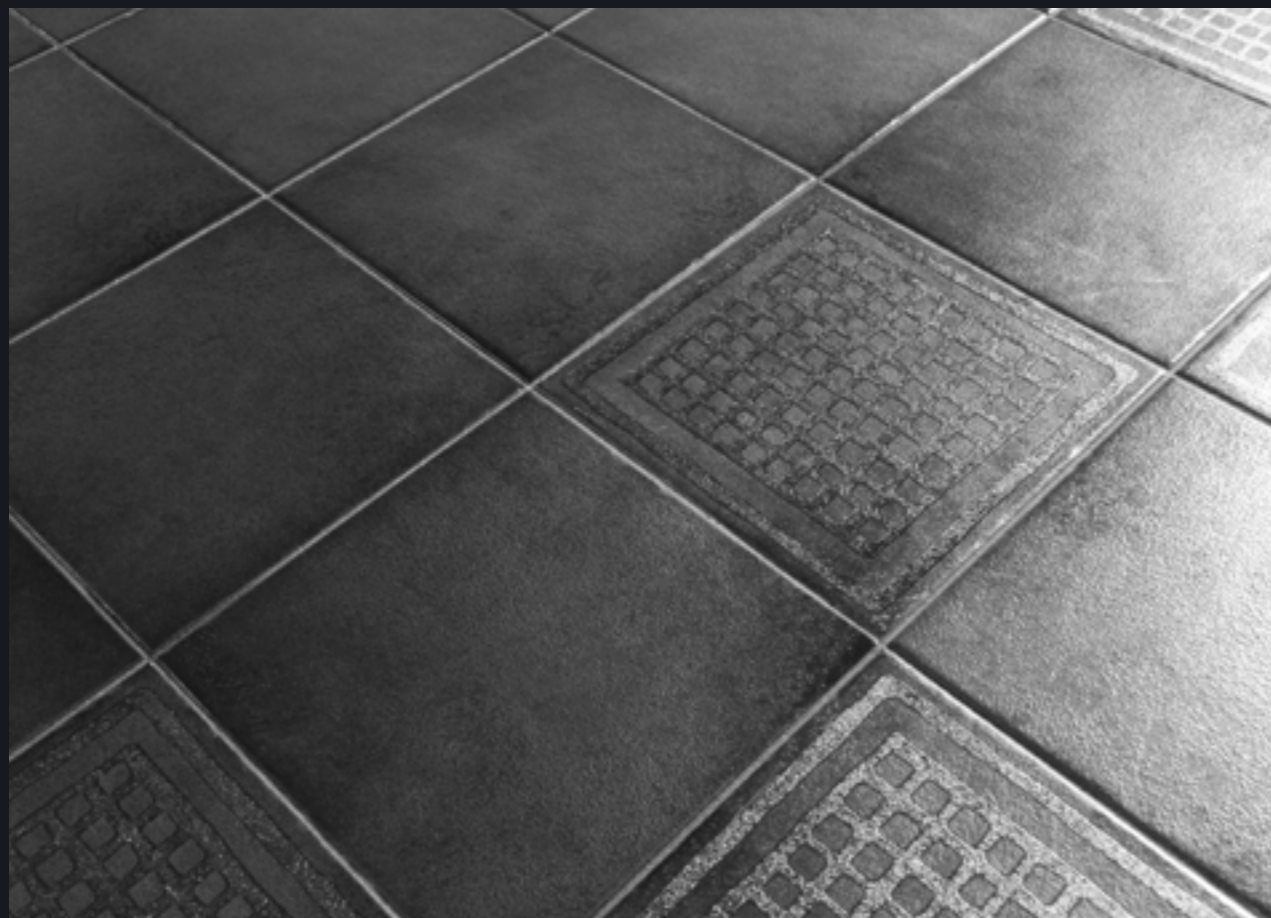




pavimento:  
**MAGMA**  
20x20 | 8"x8"  
decoro:  
**DANZATRICI**  
20x20 | 8"x8"  
**RAMO**  
20x20 | 8"x8"



pavimento:  
**MAGMA**  
20x20 | 8"x8"  
decoro:  
**LUNA ROSSA**  
20x20 | 8"x8"



pavimento:  
**MAGMA**  
20x20 | 8"x8"  
decoro:  
**QUADRETTI**  
20x20 | 8"x8"



pavimento:  
**MAGMA**  
20x20 | 8"x8"  
decoro:  
**ORME**  
20x20 | 8"x8"

## Caratteristiche tecniche

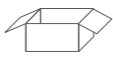
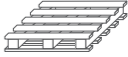
Technical Datas | Технические Характеристики

### UNI EN 14411 - GRUPPO BI a GL

CARATTERISTICHE TECNICHE TECHNICAL DATAS	NORMA SATNDARD	VALORE PRESCRITTO UNI EN 14411 - BI a REQUIRED VALUE UNI EN 14411 - BI a	MAGMA
spessore thickness	10545.2	±5%	10,5 mm ±5%
assorbimento d'acqua water absorption	10545.3	≤0,5%	≤0,05%
resistenza alla flessione bending strength	10545.4	35 MIN 1300 MIN	40 MIN 1600 MIN
resistenza all'abrasione resistance to abrasion	10545.7	CLASSE 0/5	PEI4
resistenza al gelo frost resistance	10545.12	Resistente Resistant	Resistente Resistant
resistenza alle macchie stain resistance	10545.14	CLASSE 3 MINIMO	5
resistenza ai prodotti chimici di uso domestico e additivi per piscina resistance to household chemicals and swimming-pool additives	10545.13	GB MINIMO	GA/GB
resistenza all'attacco acido e basico (escluso HF e suoi derivati) acid and alkali resistance (excluding HF and its derivatives)	10545.13	Secondo la classificazione indicata dal fabbricante As per the producer's internal classification	GLA/GLB
resistenza alla scivolosità non slip grade	DIN51130	Da R9 a R13	R9

## Pesi e imballi

Weight packing | Массы и упаковки

							
		PZ	MQ	KG	BOX	MQ	KG
MAGMA	20x20 cm	25	1,00	21,50	56	56,00	1204
DECORI MAGMA	20x20 cm	4	0,16	3,44	150	24,00	516
MOSAICO MAGMA	20x20 cm	4	0,16	3,44	150	24,00	516

## Luoghi d'impiego

Destinations | Места применения



### Abitazioni

Domestic applications  
КВАРТИРЫ



### Uffici

Offices  
УЧРЕЖДЕНИЯ



### Ristoranti - Bar

Restaurants - Cafés  
РЕСТОРАНЫ-БАР



### Alberghi

Hotels  
ГОСТИНИЦЫ

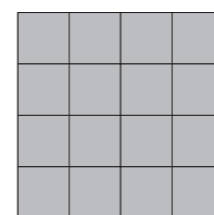


### Discoteche

Discoteques  
ДИСКОТЕКИ

## Variazione di stonalizzazione

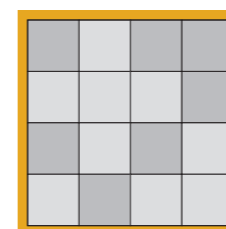
Shade variation guideline | Варианты размывки под камень применения



### V1

#### Aspetto uniforme

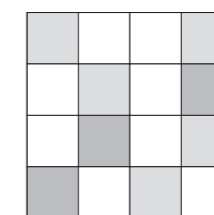
Uniform appearance  
ОДНОРОДНЫЙ ВНЕШНИЙ ВИД



### V2

#### Lieve variazione

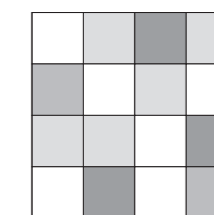
Slight variations  
НЕБОЛЬШИЕ ИЗМЕНЕНИЯ



### V3

#### Moderata variazione

Moderate variations  
УМЕРЕННЫЕ ИЗМЕНЕНИЯ



### V4

#### Forte stonalizzazione

Substantial variations  
ЗНАЧИТЕЛЬНЫЙ ТИП  
РАЗМЫВКИ ПОД КАМЕНЬ