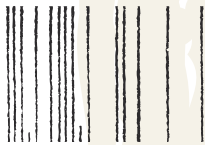





GIUNCO



Behind the mats of GIUNCO lowered on the rest of the world





Dietro le stuoie di Giunco calate sul resto del mondo



GIUNCO

bicottura in pasta bianca 12 mm
double fired wall ceramic tiles in white body 12 mm

4

GIUNCO

Immagina un'atmosfera mattutina,

una proiezione esotica. Assapora il rassicurante equilibrio dell'ambiente naturale e lascia che tutto il resto ti scivoli addosso senza turbare la



...bare ... la magia di un puro piacere di benessere. Cinque minuti, oppure dieci.

Aspetta ancora un momento al riparo dal mondo. Quanto? Questa volta decidi tu.



6

Imagine a morning atmosphere, an exotic projection.

Savour the reassuring balance of the natural environment. Let all the rest slip on you without



Hong long? This time its your choice!

breaking the magic of a pure pleasure of wellbeing. Five minutes or ten. Wait a little longer taking shelter from the world.



BLU / BIANCO

30,5x30,5 fondo gres bianco
30,5x61 / fondo blu / fondo bianco
stuoia centrale ridotta blu / stuoia centrale piena blu
stuoia laterale dx-sx blu





GIUNCO 9



30,5x30,5 fondo gres bianco
30,5x61 fondo bianco / fondo blu
10 stuoia centrale ridotta blu
stuoia centrale piena blu
stuoia laterale dx-sx blu

30,5x61 fondo blu
stuoia centrale ridotta blu
stuoia centrale piena blu



AVORIO

30,5x30,5 fondo gres avorio
30,5x61 fondo avorio / stuoia centrale ridotta avorio
stuoia centrale piena avorio / stuoia laterale dx-sx avorio





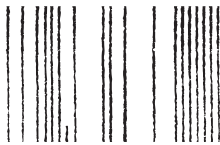
GIUNCO



30,5x61 fondo avorio
stuoia centrale ridotta avorio
stuoia centrale piena avorio
stuoia laterale dx-sx avorio



30,5x61 fondo avorio
stuoia laterale dx-sx avorio



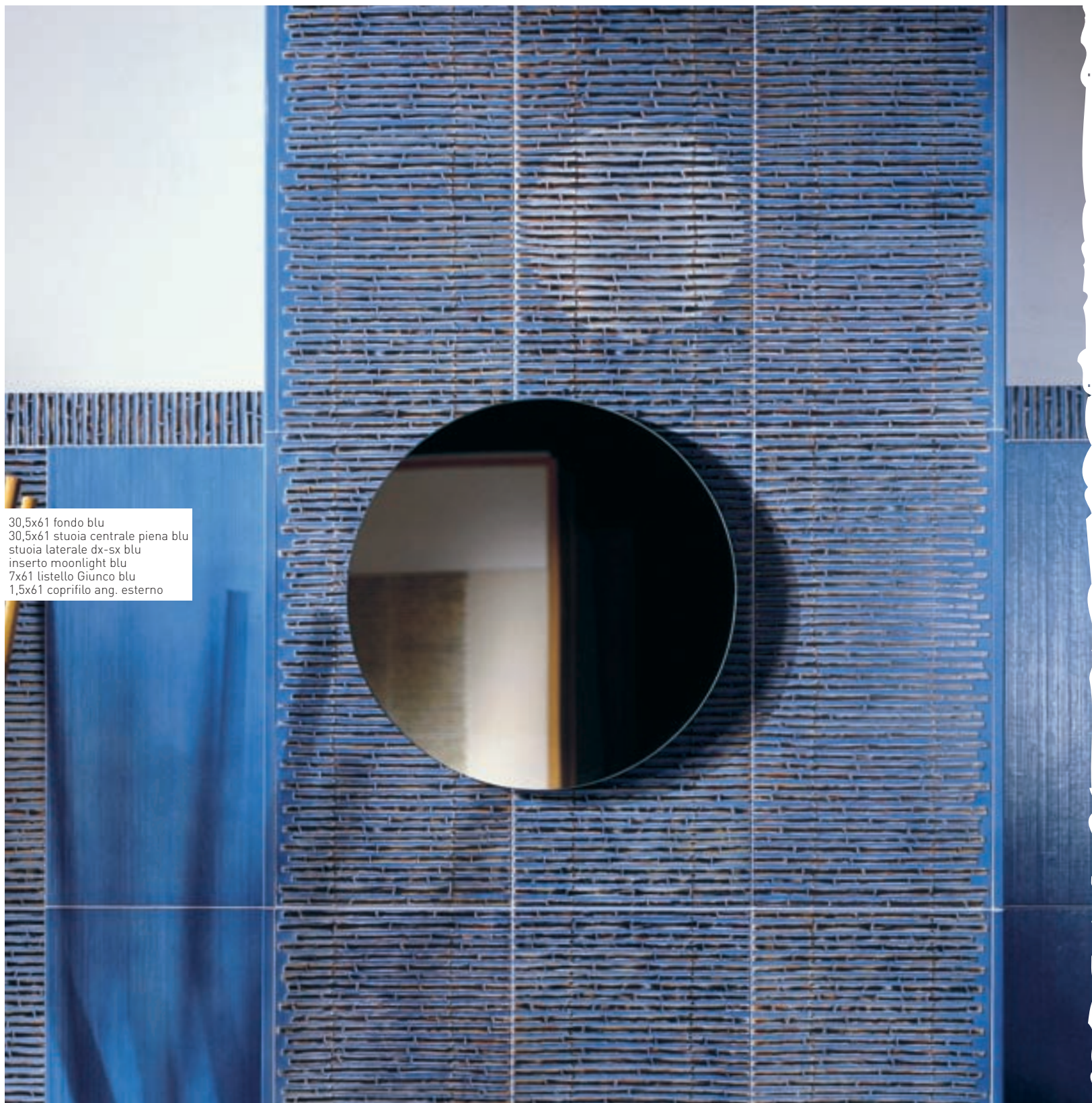
BLU / CELESTE

- 30,5x30,5 fondo gres celeste
- 30,5 x61 fondo blu / fondo celeste / stuoia centrale piena blu
- stuoia laterale dx-sx blu / 7x61 listello Giunco
- 30,5x61 inserto moonlight blu / 91,5x122 comp. Aironi (pz. 6)
- 1,5x61 coprifilo ang. esterno
- 2,5x1,5 spigolo coprifilo a tre vie
- 1,5x1,5 spigolo coprifilo a due vie
- 123x61x15 comp. lavabo floreale curvo (pz. 5)





GIUNCO 17

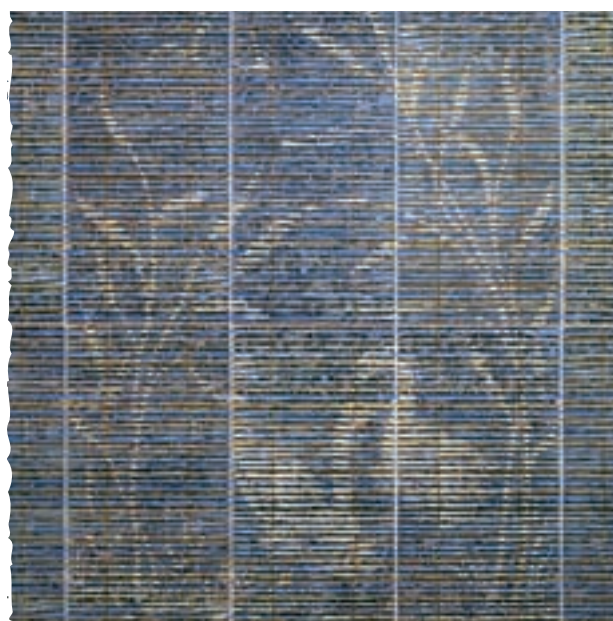


30,5x61 fondo blu
30,5x61 stuoia centrale piena blu
stuoia laterale dx-sx blu
inserto moonlight blu
7x61 listello Giunco blu
1,5x61 coprifilo ang. esterno





91,5x122 comp. Aironi
su fondo blu (pz. 6)



AVORIO

- 30,5x30,5 fondo gres avorio
- 30,5x61 fondo avorio
- stuoia centrale piena avorio / stuoia laterale dx-sx avorio
- 7x61 listello Giunco avorio
- 30,5x122 comp. Stagno avorio (pz.2)
- 1,5x61 coprifilo ang. esterno avorio
- 123x61x15 comp. lavabo floreale curvo avorio (pz.5)





GIUNCO 21



30,5x30,5 fondo gres avorio
30,5x61 fondo avorio
7x61 listello Giunco avorio
1,5x61 coprifilo ang. esterno
avorio

22



30,5x61 fondo avorio
stuoia centrale piena avorio
stuoia laterale dx-sx avorio
119,5x61x15 comp. lavabo
floreale piano avorio (pz. 5)



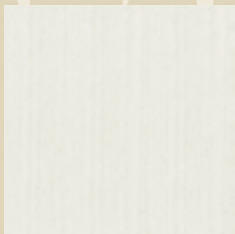


GIUNCO

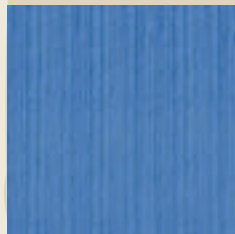
Bicottura in pasta bianca - 12 mm / Gres porcellanato smaltato ad alto spessore - 12 mm
Double fired wall ceramic tiles in white body - 12 mm / Glazed porcelain tiles 12 mm thickness

le collezioni

bianco



blu



celeste

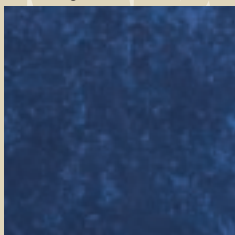


avorio



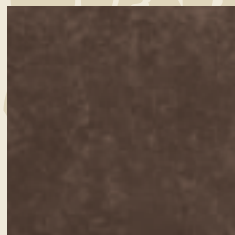
fondi gres "Erredieci"

blu stagno



30,5x30,5 cm
12" x 12"
cod. 2FFBS3R

bruno



30,5x30,5 cm
12" x 12"
cod. 2FF763R



Fondo
30,5x61 cm
12" x 24"^{3/16}
cod. 2FF0536



Fondo gres
30,5x30,5 cm
12" x 12"
cod. 2FF0530



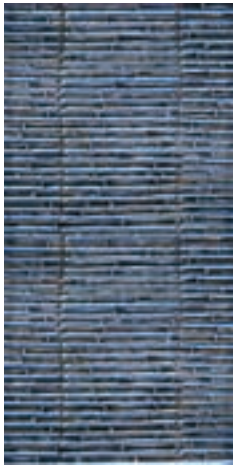
Coprifilo ang. est.
1,5x61 cm
9/16" x 24"^{3/16}
cod. 2FD05CN



Spig. Coprifilo 2 vie
1,5x1,5 cm
9/16" x 9/16"
cod. 2FD052V



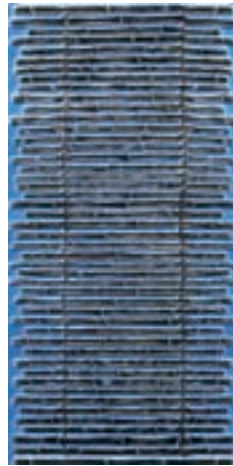
Spig. Coprifilo 3 vie
2,5x1,5 cm
1" x 9/16"
cod. 2FD053V



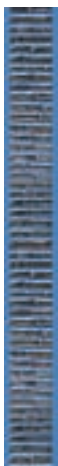
Stuoia centrale piena
30,5x61 cm
12" x 24"^{3/16}
cod. 2FD05SN



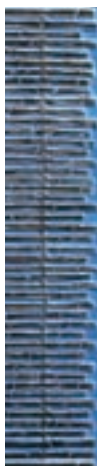
Stuoia laterale dx/sx
30,5x61 cm
12" x 24"^{3/16}
cod. 2FD05DS



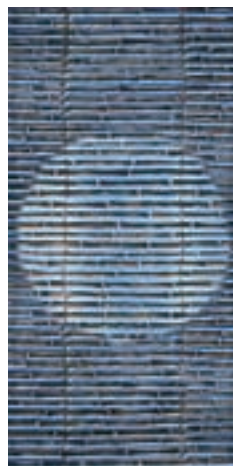
Stuoia centrale ridotta
30,5x61 cm
12" x 24"^{3/16}
cod. 2FD05SR



Listello Giunco
7x61 cm
2"^{3/4} x 24"^{3/16}
cod. 2FD05LG



Fascia Giunco
12,5x61 cm
5" x 24"^{3/16}
cod. 2FD05FG



Inserto Moonlight
30,5x61 cm
12 x 24"^{3/16}
cod. 2FD05IM



Fondo
30,5x61 cm
12" x 24"^{3/16}
cod. 2FF0436



Fondo gres
30,5x30,5 cm
12" x 12"
cod. 2FF0430



Coprifilo ang. est.
1,5x61 cm
9/16" x 24"^{3/16}
cod. 2FD04CN



Spig. Coprifilo 2 vie
1,5x1,5 cm
9/16" x 9/16"
cod. 2FD042V



Spig. Coprifilo 3 vie
2,5x1,5 cm
1" x 9/16"
cod. 2FD043V



Stuoia centr. piena
30,5x61 cm
12" x 24"^{3/16}
cod. 2FD04SN



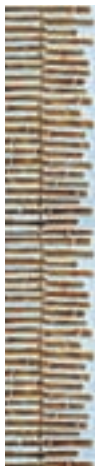
Stuoia later. dx/sx
30,5x61 cm
12" x 24"^{3/16}
cod. 2FD04DS



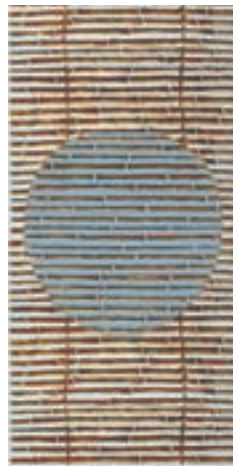
Stuoia cent. ridotta
30,5x61 cm
12" x 24"^{3/16}
cod. 2FD04SR



Listello Giunco
7x61 cm
2"^{3/4} x 24"^{3/16}
cod. 2FD04LG



Fascia Giunco
12,5x61 cm
5" x 24"^{3/16}
cod. 2FD04FG



Inserto Moonlight
30,5x61 cm
12 x 24"^{3/16}
cod. 2FD04IM



Fondo
30,5x61 cm
12" x 24"^{3/16}
cod. 2FF5536



Fondo gres
30,5x30,5 cm
12" x 12"
cod. 2FF5530



Coprifilo ang. est.
1,5x61 cm
9/16" x 24"^{3/16}
cod. 2FD55CN



Spig. Coprifilo 2 vie
1,5x1,5 cm
9/16" x 9/16"
cod. 2FD552V



Spig. Coprifilo 3 vie
2,5x1,5 cm
1" x 9/16"
cod. 2FD553V



Stuoia centr. piena
30,5x61 cm
12" x 24"^{3/16}
cod. 2FD55SN



Stuoia later. dx/sx
30,5x61 cm
12" x 24"^{3/16}
cod. 2FD55DS



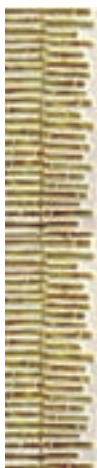
Stuoia cent. ridotta
30,5x61 cm
12" x 24"^{3/16}
cod. 2FD55SR

GIUNCO

31



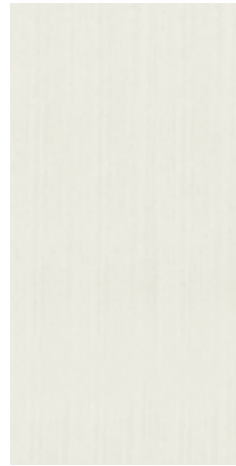
Listello Giunco
7x61 cm
2"^{3/4} x 24"^{3/16}
cod. 2FD55LG



Fascia Giunco
12,5x61 cm
5" x 24"^{3/16}
cod. 2FD55FG



Inserito Sunset
30,5x61 cm
12" x 24"^{3/16}
cod. 2FD55IS



Fondo
30,5x61 cm
12" x 24"^{3/16}
cod. 2FF0836



Fondo gres
30,5x30,5 cm
12" x 12"
cod. 2FF0830



Coprifilo ang. est.
1,5x61 cm
9/16" x 24"^{3/16}
cod. 2FD08CN



Spig. Coprifilo 2 vie
1,5x1,5 cm
9/16" x 9/16"
cod. 2FD082V



Spig. Coprifilo 3 vie
2,5x1,5 cm
1" x 9/16"
cod. 2FD083V



Stuoia centr. piena
30,5x61 cm
12" x 24"^{3/16}
cod. 2FD08SN



Stuoia later. dx/sx
30,5x61 cm
12" x 24"^{3/16}
cod. 2FD08DS



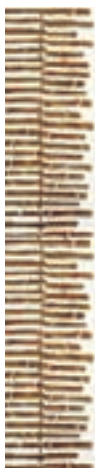
Stuoia cent. ridotta
30,5x61 cm
12" x 24"^{3/16}
cod. 2FD08SR

GIUNCO

33



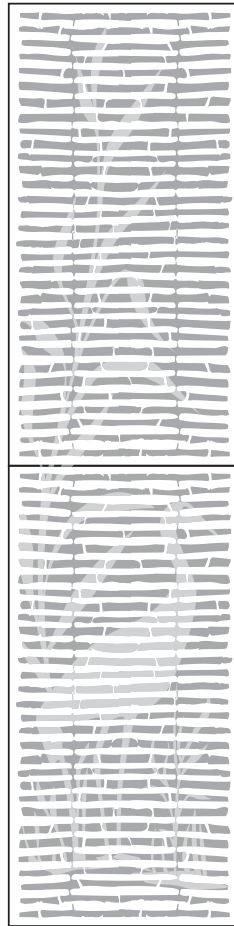
Listello Giunco
7x61 cm
2"^{3/4} x 24"^{3/16}
cod. 2FD08LG



Fascia Giunco
12,5x61 cm
5" x 24"^{3/16}
cod. 2FD08FG



Inserto Sunset
30,5x61 cm
12 x 24"^{3/16}
cod. 2FD08IS

**Comp. Stagno (pz 2)**

30,5x122 cm

12" x 48^{1/16}

elem. formato

30,5x61 cm (pz 2)

cod. 2FD**CT

su fondo

blu (05)**celeste (04)****avorio (55)****bianco (08)****Comp. Aironi (pz 6)**

91,5x122 cm

36" x 48^{1/16}

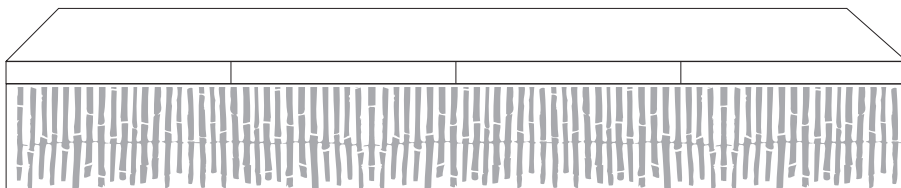
elem. formato

30,5x61 cm (pz 6)

cod. 2FD**CA

su fondo

blu (05)**celeste (04)****avorio (55)****bianco (08)**



Comp. Lavabo Giunco con bordino piano (pz 14)

122x61x16 cm
48^{-1/16} x 24^{-3/16} x 6^{-5/16}

cod. 2FD**L3/P

Elementi

12,5x61 cm (pz 4) Fascia Giunco cod. 2FD**FG
3,5x30,5 cm (pz 8) Bordino Piano cod. 2FD**BP
1,5x16 cm (pz 2) Spigolo Bordino cod. 2FD**SP

avorio (55) e blu (05)

Comp. Lavabo Giunco con bordino ad Anelli (pz 14)

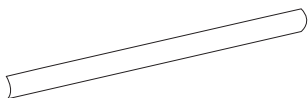
122x61x16 cm
48^{-1/16} x 24^{-3/16} x 6^{-5/16}

cod. 2FD**L3/A

Elementi

12,5x61 cm (pz 4) Fascia Giunco cod. 2FD**FG
3,5x30,5 cm (pz 8) Bordino Anelli cod. 2FD**BA
1,5x16 cm (pz 2) Spigolo Bordino Anelli cod. 2FD**SA

avorio (55) e blu (05)

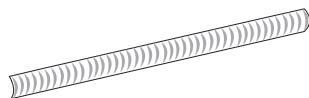


Bordino piano

3,5x30,5 cm
1^{-3/8} x 12⁻

cod. 2FD**BP

avorio (55) e blu (05)



Bordino ad Anelli

3,5x30,5 cm
1^{-3/8} x 12⁻

cod. 2FD**BA

avorio (55) e blu (05)

GIUNCO

35



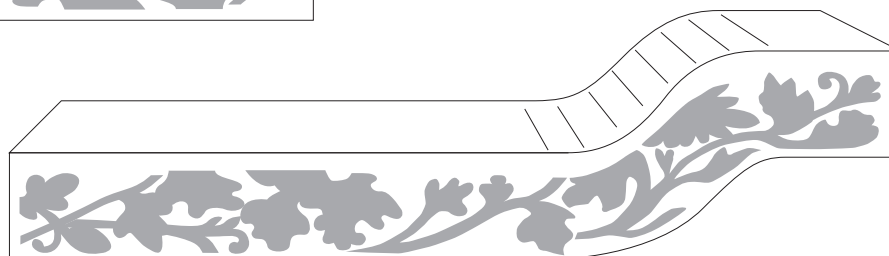
Comp. Lavabo Floreale piano (pz 5)

119,5x61x15 cm
47^{-1/16} x 24^{-3/16} x 5^{-7/8}

15x119,5 cm (pz 1) Fascia centrale Lavabo
15x56,5 cm (pz 2) Fascia laterale Lavabo
2,5x15 cm (pz 2) Spigolo Lavabo

cod. 2FD**L2

avorio (55) e blu (05)



Comp. Lavabo Floreale curvo (pz 5)

123x61x15 cm
48^{-7/16} x 24^{-3/16} x 5^{-7/8}

15x123 cm (pz 1) Fascia centrale Lavabo
15x56,5 cm (pz 2) Fascia laterale Lavabo
2,5x15 cm (pz 2) Spigolo Lavabo

cod. 2FD**L1

avorio (55) e blu (05)

packing list / imballaggi / verpackung / emballage /

Formato Size Format Format	Denominazione Description Bezeichnung Description	Spessore Thickness Stärke Epaisseur	PZ / PAC PCS / PACK STK / KAR PCS / PAQUET	MQ / PAC SQM / PACK QM / KAR M2 / PAQUET	KG / PAC KG / PACK KG / KAR KG / PAQUET	PAC / PAL PACK / PAL KAR / PAL PAQ / PAL	MQ / PAL SQM / PAL QM / PAL M2 / PAL	KG / PAL KG / PAL KG / PAL KG / PAL
30,5 x 61 - 12"x 24"3/16	Fondo e Decoro	12	6	1,1163	21,62	40	44,65	900
30,5 x 30,5 - 12"x 12"	Fondo Gres	12	12	1,1163	28,75	40	44,65	1175
61 x 61 - 24"3/16x 24"3/16	Composizione (30,5x61 pz.2)	12	2	0,3722	4,80	-	-	-
91,5 x 122 - 36"x 48"1/16	Composizione (30,5x61 pz.6)	12	6	1,1163	14,40	-	-	-
12,5 x 61 - 5"x 24"3/16	Fascia Giunco	12	10	0,7630	10,00	-	-	-
7 x 61 - 2" 3/4x 24"3/16	Listello Giunco	12	10	0,4270	8,30	-	-	-
3,5 x 30,5 - 1"3/8x 12"	Bordino Anelli	12	21	0,2247	5,25	-	-	-
1,5 x 16 - 9/16"x 6"5/16	Spigolo bordino Anelli	12	1	0,0024	-	-	-	-
3,5 x 30,5 - 1"3/8x 12"	Bordino Piano	12	21	0,2247	4,50	-	-	-
1,5 x 16 - 9/16"x 6"5/16	Spigolo bordino Piano	12	1	0,0024	-	-	-	-
1,5 x 61 - 9/16"x 24"3/16	Coprifilo angolo esterno	12	16	0,1472	3,70	-	-	-
123 x 61 x 15	Comp. lavabo flor. Curvo	12	5	-	-	-	-	-
119,5 x 61 x 15	Comp. lavabo flor. Piano	12	5	-	-	-	-	-
122 x 61 x 16	Comp. lavabo Giunco Anelli	12	14	-	-	-	-	-
122 x 61 x 16	Comp. lavabo Giunco Piano	12	14	-	-	-	-	-



GL-UGL	GL-UGL	GL-UGL	GL-UGL	GL-UGL
Spessore	Assorbimento acqua	Resistenza al gelo	Resistenza alla flessione	Carico di rottura medio
Thickness	Water absorption	Frost resistance	Bending strenght	Breakage load
Epaisseur	Absorption d'eau	Résistance au gel	Résistance au poinçonnement statique	Charge de rupture
Stärke	Wasseraufnahme	Frostbeständigkeit	Biegefestigkeit	Bruchlast
mm	ISO 10545-3 Classe Bla - ASTM C 373 (E <=0,5%)	EN 202 ISO 10545-12 ASTM C 1026	ISO10545-4	ISO 10545-4 ASTM C 648 COMPLIANT
Bicottura Pasta Bianca 12mm	B III	-	-	-
30,5x30,5 Fondo Gres 12mm	<= 0,2%	ingelivo, frostresistent, ingelif, frostbeständig	N/mm2 >= 54	ISO 10545-4:5 >= 3600N

caratteristiche tecniche / technical characteristics /

37



GL	GL-UGL	GL-UGL	GL-UGL	
Resistenza abrasione	Durezza superficiale	Resistenza alla macchia	Dilatazione termica lineare	
Abrasion resistance	Scratch resistance	Stain resistance	Linear thermal expansion	
Résistance à l'abrasion	Dureté superficielle	Résistance à la tache	Dilatation thermique lineaire	
Abriebfestigkeit	Oberflächenhärte	Fleckenbeständigkeit	Thermische dilatation	
EN 154 ISO 10545-7 ASTM C 1027	EN 101 MOHS	ISO 10545-14	EN 103 ISO 10545-8	
Bicottura Pasta Bianca PEI IV	MOHS 6÷7	Resistente - Resistent Résistant - Gemäß	-	
30,5x30,5 Fondo Gres PEI IV	MOHS 7	-	6,6 X 10 ⁻⁶	

/ caractéristiques techniques / technische kennzeichen



GIUNCO



pubblicazione a cura di
Direzione marketing Tagina Ceramiche d'Arte

progetto grafico
BCPT Associati Perugia

art direction
Marco Tortoioli Ricci

impaginazione e grafica
Andrea Filippucci
Claudia Richieri

testi
Riccardo Raspa

fotografie
Daniele Mussatti

stampa
Litographic Group

finito di stampare nel mese di luglio 2006





Via Flaminia - Zona Industriale Nord
06023 Gualdo Tadino - Perugia (Italia)
Tel: +39 075 91471 - Fax: +39 075 9141375
e-mail: info>tagina.it - www.tagina.it

